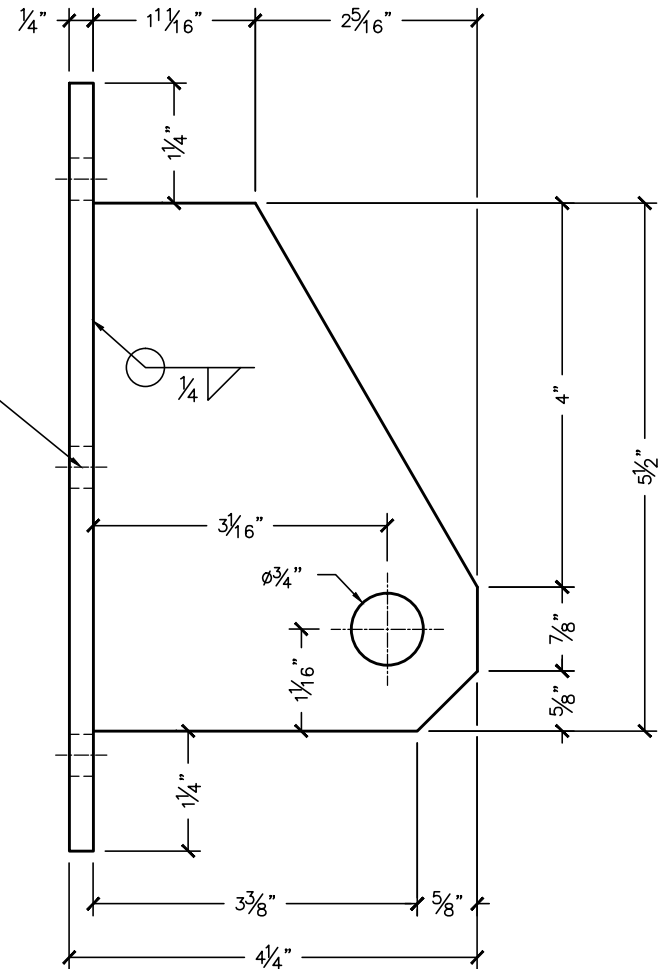
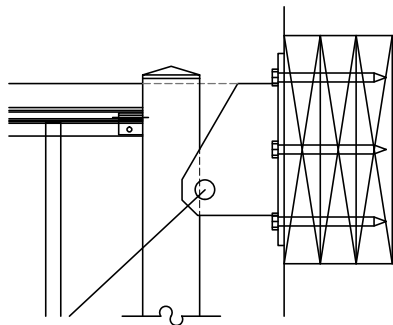


(6) $\frac{7}{16}$ " HOLES FOR
 $\frac{3}{8}$ "X5" LAGS TYPICAL



SIDE ELEVATION



FRONT ELEVATION

- (6) $\frac{3}{8}$ " x 5" LAG SCREWS OR
- (6) $\frac{3}{8}$ " THRU BOLTS OR
- (6) $\frac{3}{8}$ " x $\frac{3}{2}$ " EXPANSION ANCHORS

NOTE:
SAG ROD BRACKET IS
FABRICATED FROM COLD
FORMED $\frac{1}{4}$ " STEEL

TOP OF THE BRACKET FLASH
WITH TOP OF THE RAILING.
DECK CONNECTION TYPICAL
SCALE 1 : 8

CLIENT NAME		SALE REPRESENTATIVE MARK WEISSENBUHLER		AMERICAN STRUCTURES & DESIGN INC. 218 STEWART RD SE PACIFIC, WA 98047	
APPROVAL		JOB #		PHONE 253 833-4343	
REVISION #		DRAWING #		FAX # 253 833-4545	
				PRE ³ SAG ROD BRACKET	
				http://americanstructures.com	
				SCALE 1 : 2	
				DATE	