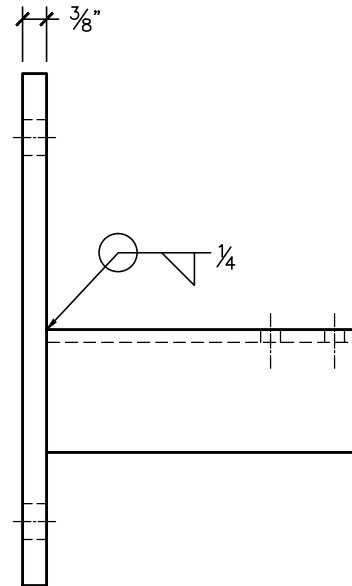
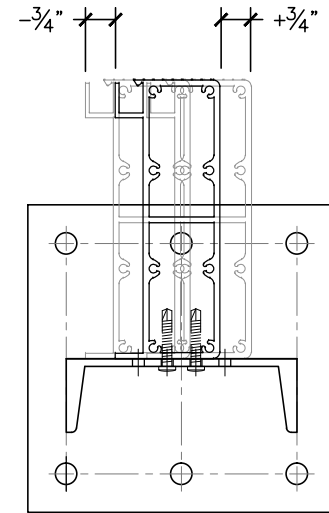


(6)  $\phi\frac{1}{16}$ " HOLES FOR  $\frac{1}{2}$ " ATTACHMENT TYPICAL

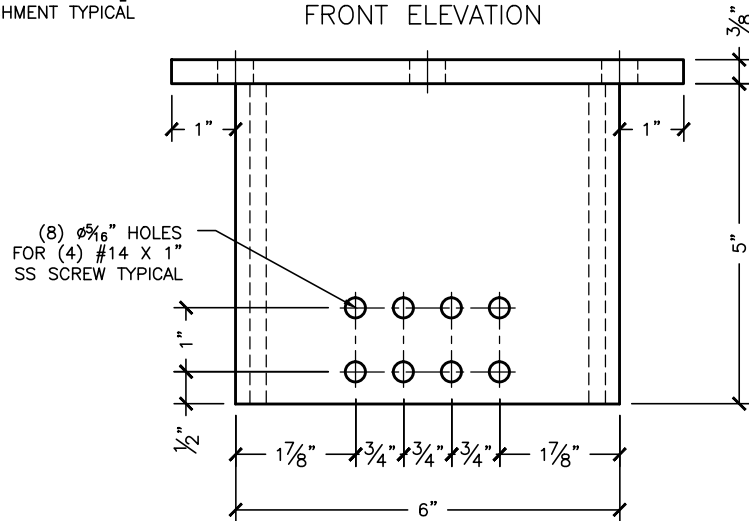
FRONT ELEVATION



SIDE ELEVATION



FASCIA WILL BE ATTACH TO SIDE BRACKET WITH (4) #14 X 1.5" S.S. SCREWS ADJUST  $\pm\frac{3}{4}$ " FROM CENTER MOUNTING DETAIL SCALE 1 : 5



(8)  $\phi\frac{5}{16}$ " HOLES FOR (4) #14 X 1" SS SCREW TYPICAL

TOP VIEW

NOTE:  
BRACKET IS FABRICATED FROM  
HOT OR COLD FORMED  $\frac{3}{8}$ " STEEL PLATE AND  
CHANNEL C6X8.2 - Standard A572 Grade 50

- (6)  $\phi\frac{1}{2}$ " x  $4\frac{1}{2}$ " LAG SCREWS OR
- (6)  $\phi\frac{1}{2}$ " x THRU BOLTS OR
- (6)  $\phi\frac{1}{2}$ " x  $3\frac{1}{2}$ " EXPANSION ANCHORS

CLIENT NAME		SALE REPRESENTATIVE MARK WEISSENBUHLER		AMERICAN STRUCTURES & DESIGN INC.	
APPROVAL		JOB #		218 STEWART RD SE PACIFIC, WA 98047	
REVISION #		DRAWING #		PRE <sup>3</sup> SIDE BRACKET FOR DECKS	
-				SCALE 1 : 3	
http://americanstructures.com				DATE 3. 13. 2014	