

- NOTE: 1) SUBFASCIA BRACKET – MINIMUM 3 PER UNIT. SPACING VARIES ON PROJECTION
 2) SEE TABLE FOR MAX SAG ROD SPACING

DECK PROJECTION
 (BACK OF SUBFASCIA TO FRONT OF FASCIA)
 MIN. 8 1/4" PROJECTION
 @ 6" INCREMENT INCREASES

PROJECTION _____ FT. _____ IN.

(SEE SPAN TABLES FOR FOR MAXIMUM PROJECTION)

RAIL TYPE:

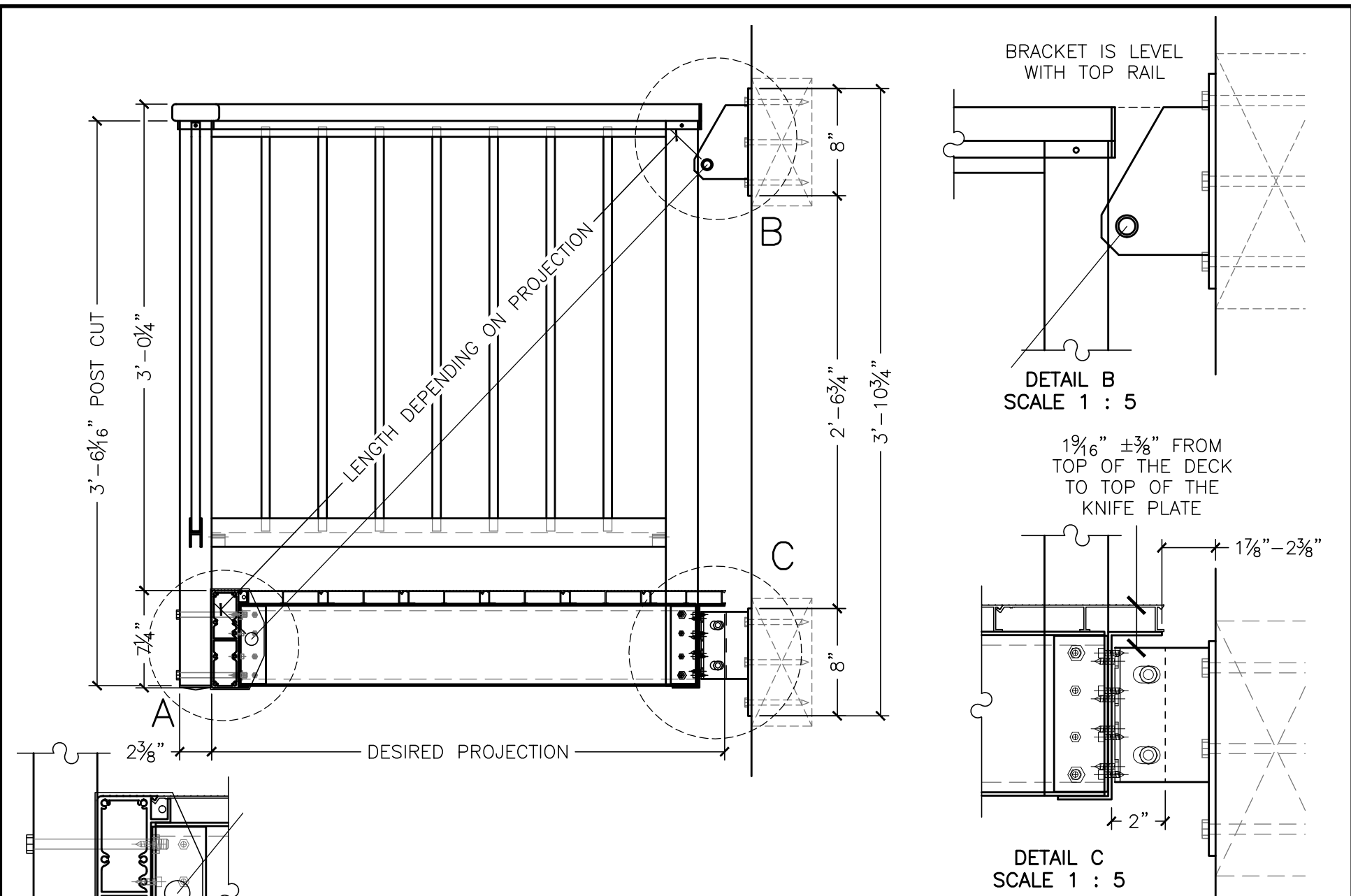
- TR100
- TR200
- TR999

RAIL HEIGHT:

- 42" 36"

COLOR: _____

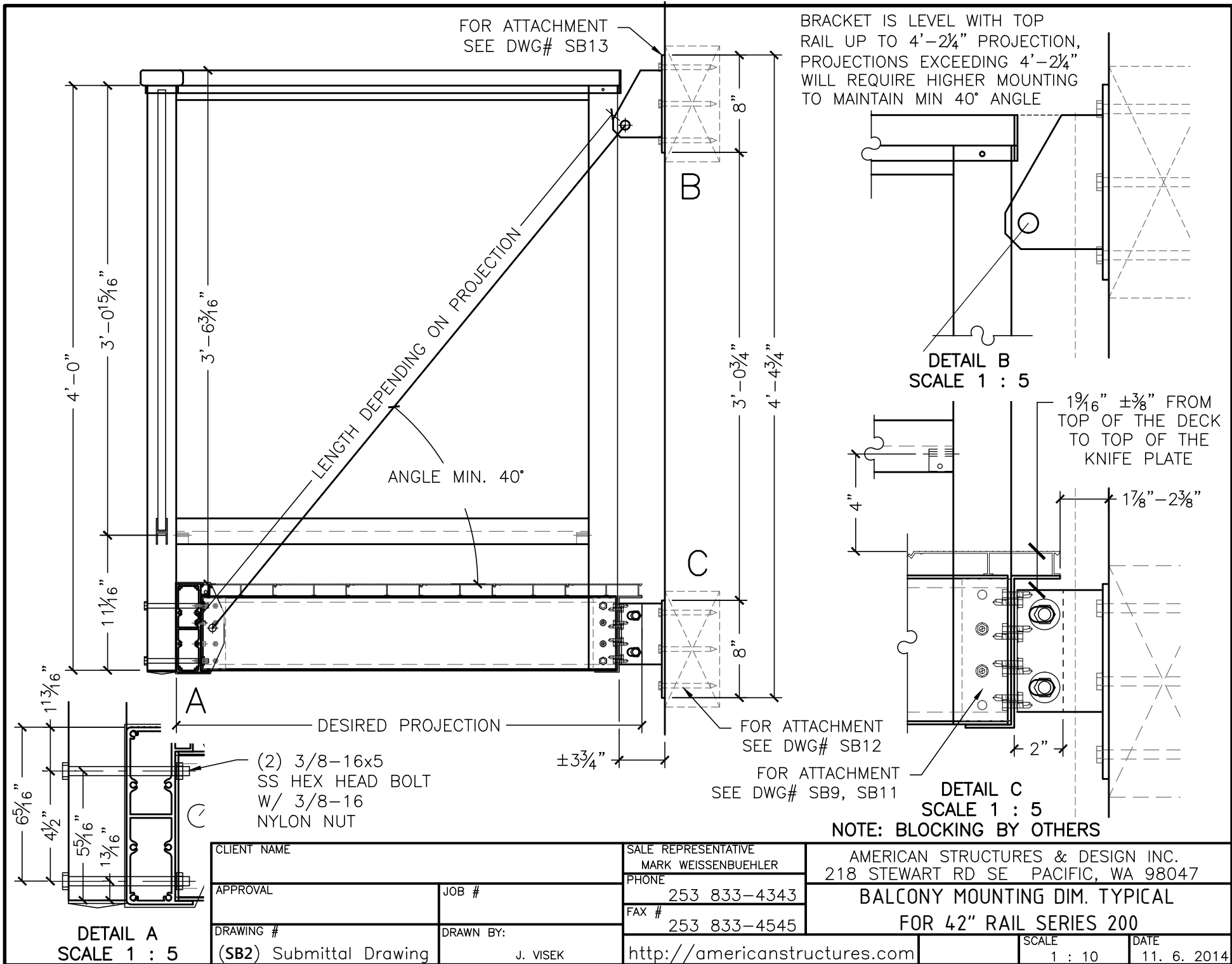
CLIENT NAME		SALE REPRESENTATIVE MARK WEISSENBUHLER		AMERICAN STRUCTURES & DESIGN INC. 218 STEWART RD SE PACIFIC, WA 98047	
APPROVAL		JOB #		PHONE 253 833-4343	
DRAWING # (SB1) Submittal Drawing		DRAWN BY: J. VISEK		FAX # 253 833-4545	
				AS&D ALU. BALCONY ORDER SHEET	
				http://americanstructures.com	
				SCALE 1 : 16	
				DATE 7. 9. 2014	



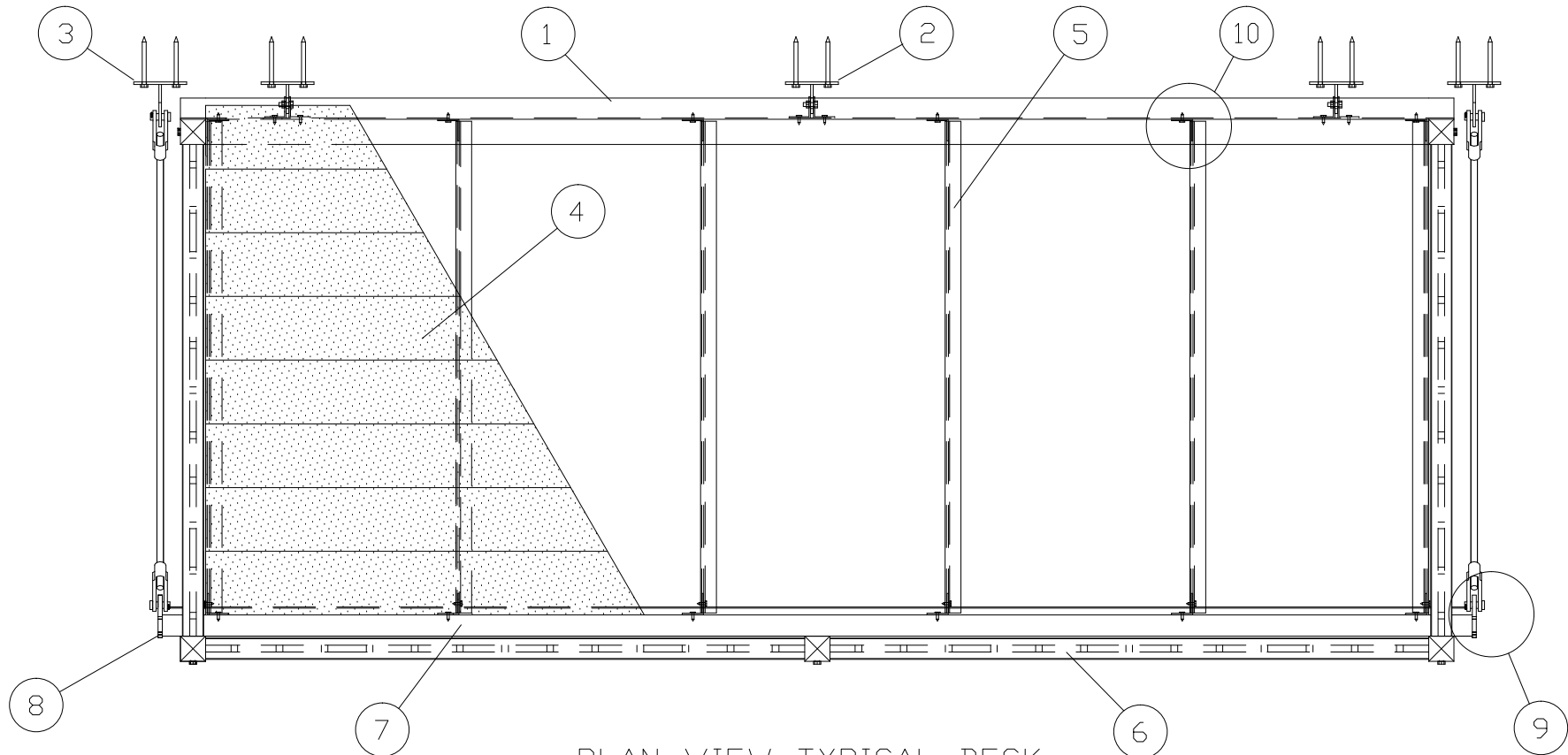
NOTE: BLOCKING BY OTHERS

DETAIL A
SCALE 1 : 5

CLIENT NAME		SALE REPRESENTATIVE MARK WEISSENBUHLER		AMERICAN STRUCTURES & DESIGN INC. 218 STEWART RD SE PACIFIC, WA 98047	
APPROVAL		JOB #		PHONE 253 833-4343	
DRAWING # (SB2) Submittal Drawing		DRAWN BY: J. VISEK		FAX # 253 833-4545	
				BALCONY MOUNTING DIM. TYPICAL FOR 36" RAIL SERIES 200	
				SCALE 1 : 10	
				DATE 7. 9. 2014	
http://americanstructures.com					



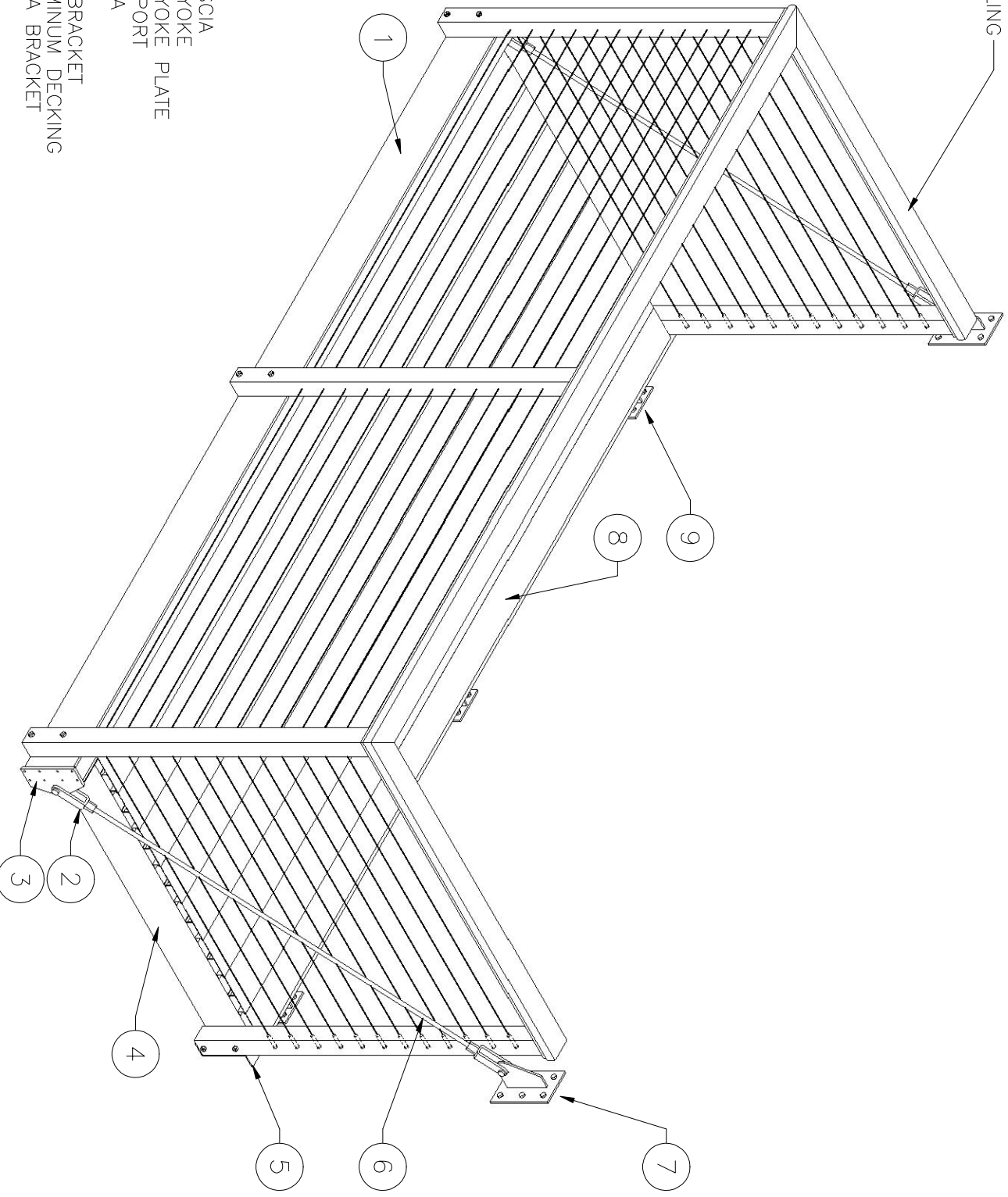
1. PRE³ SUB-FASCIA: SEE DWG# (SB14)
2. PRE³ SUB FASCIA BRACKET: SEE DWG# (SB12)
3. PRE³ SAG ROD BRACKET: SEE DWG# (SB13)
4. PRE³ ALUMINUM DECKING: SEE DWG# (SB21)
5. PRE³ DECK JOIST: SEE DWG# (SB20), (SB10)
6. PRE³ 42" HIGH ALUM RAILING: SEE DWG# (SB2)
7. PRE³ FRONT DECK FASCIA: SEE DWG# (SB8)
8. PRE³ YOKE PLATE: SEE DWG# (SB17)
9. PRE³ YOKE AND SAG ROD CONNECTION: SEE DWG# (SB18)
10. PRE³ JOIST AND ANGLE BRACKET CONNECTION: SEE DWG# (SB9)



PLAN VIEW TYPICAL DECK

CLIENT NAME: AMERICAN STRUCTURES AND DESIGN INC.		SALE REPRESENTATIVE		AMERICAN STRUCTURES & DESIGN INC. 218 STEWART RD SE PACIFIC WA. 98047	
APPROVAL		JOB #	PHONE 253 833-4343	PRODUCT NAME	
REVISION #		DRAWING # SB3	FAX # 253 833-4545	PRE ³ ALUMINUM BALCONY SYSTEM	
			http://americanstructures.com	2 OF 14	SCALE N/S
					DATE 3-12-13

PRE³ ALUMINUM RAILING SYSTEM (TR2000)

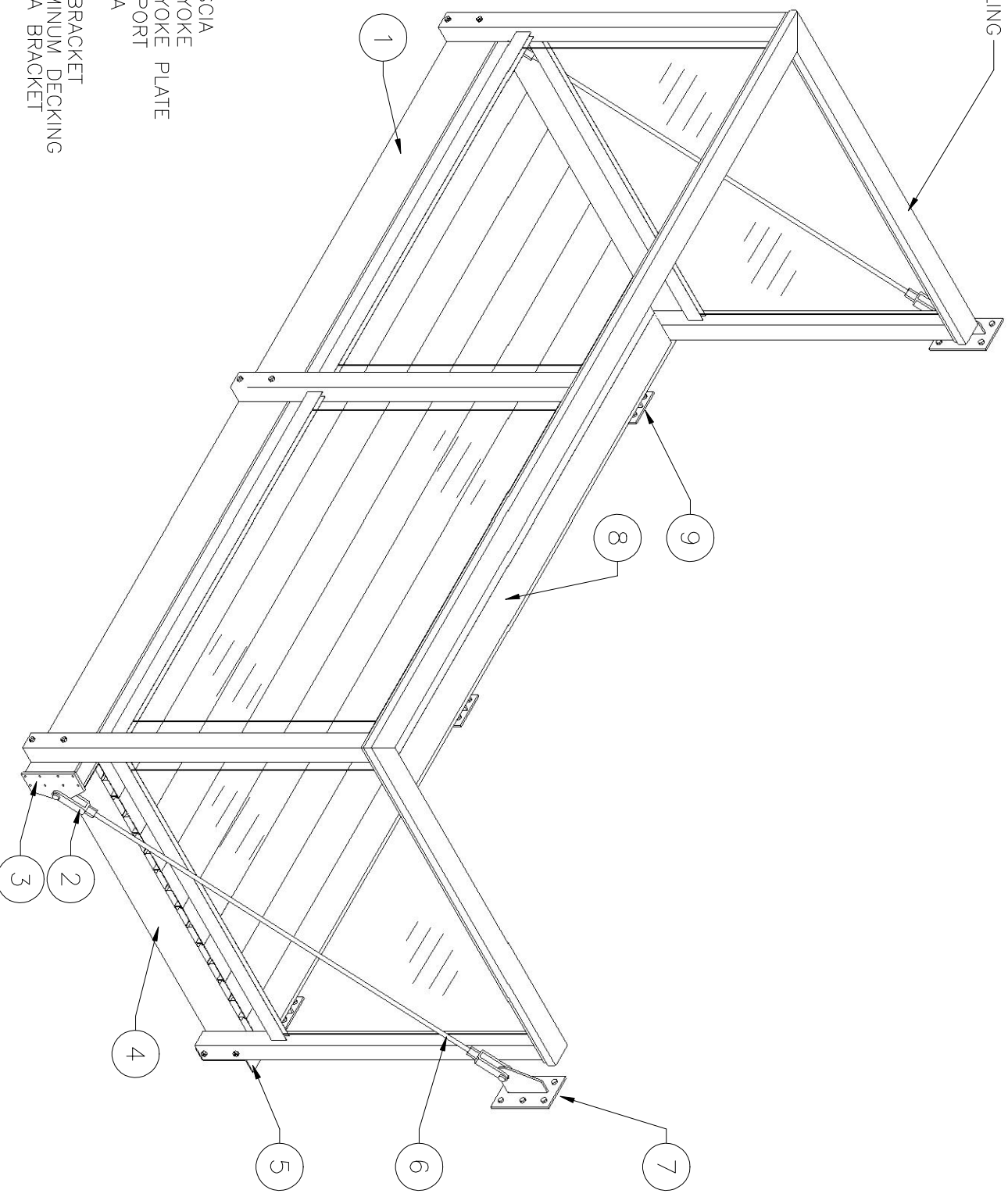


SHEET NOTES:

1. PRE³ FRONT FASCIA
2. PRE³ SAG ROD YOKE
3. PRE³ SAG ROD YOKE PLATE
4. PRE³ JOIST SUPPORT
5. PRE³ SUB FASCIA
6. PRE³ SAG ROD BRACKET
7. PRE³ SAG ROD
8. PRE³ D1x6 ALUMINUM DECKING
9. PRE³ SUB FASCIA BRACKET

CLIENT NAME SUBMITTAL		SALE REPRESENTATIVE MARK WEISSENBUEHLER		AMERICAN STRUCTURES & DESIGN INC. 218TH STEWART RD SE PACIFIC, WA 98047	
APPROVAL	JOB #	PHONE 253 833-4343	FAX # 253 833-4545	PRE ³ PRE ENGINEERED DECK W/200 SERIES RAIL & CABLE INFILL	
REVISION # 2	DRAWING #	http://americanstructures.com		SCALE	DATE 10. 27. 12

PRE³ ALUMINUM RAILING SYSTEM (TR200)

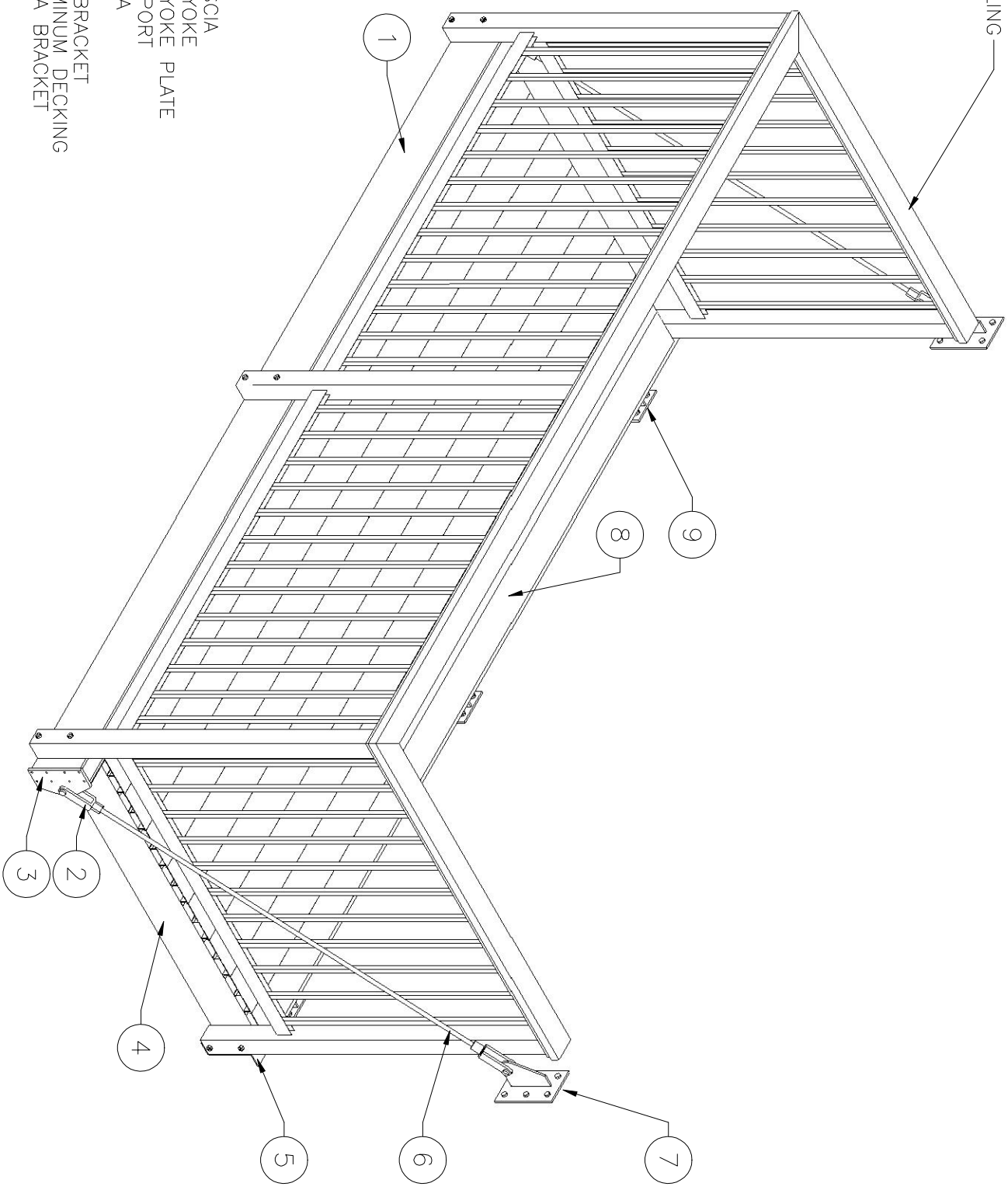


SHEET NOTES:

- 1. PRE³ FRONT FASCIA
- 2. PRE³ SAG ROD YOKE
- 3. PRE³ SAG ROD YOKE PLATE
- 4. PRE³ JOIST SUPPORT
- 5. PRE³ SUB FASCIA
- 6. PRE³ SAG ROD
- 7. PRE³ SAG ROD BRACKET
- 8. PRE³ D1x6 ALUMINUM DECKING
- 9. PRE³ SUB FASCIA BRACKET

CLIENT NAME SUBMITTAL		SALE REPRESENTATIVE MARK WEISSENBUEHLER		AMERICAN STRUCTURES & DESIGN INC. 218TH STEWART RD SE PACIFIC, WA 98047	
APPROVAL	JOB #	PHONE 253 833-4343	FAX # 253 833-4545	PRE ³ PER ENGINEERED DECK W/200 SERIES RAIL & GLASS INFILL	
REVISION # 2	DRAWING #	http://americanstructures.com		SCALE	DATE 10. 27. 12

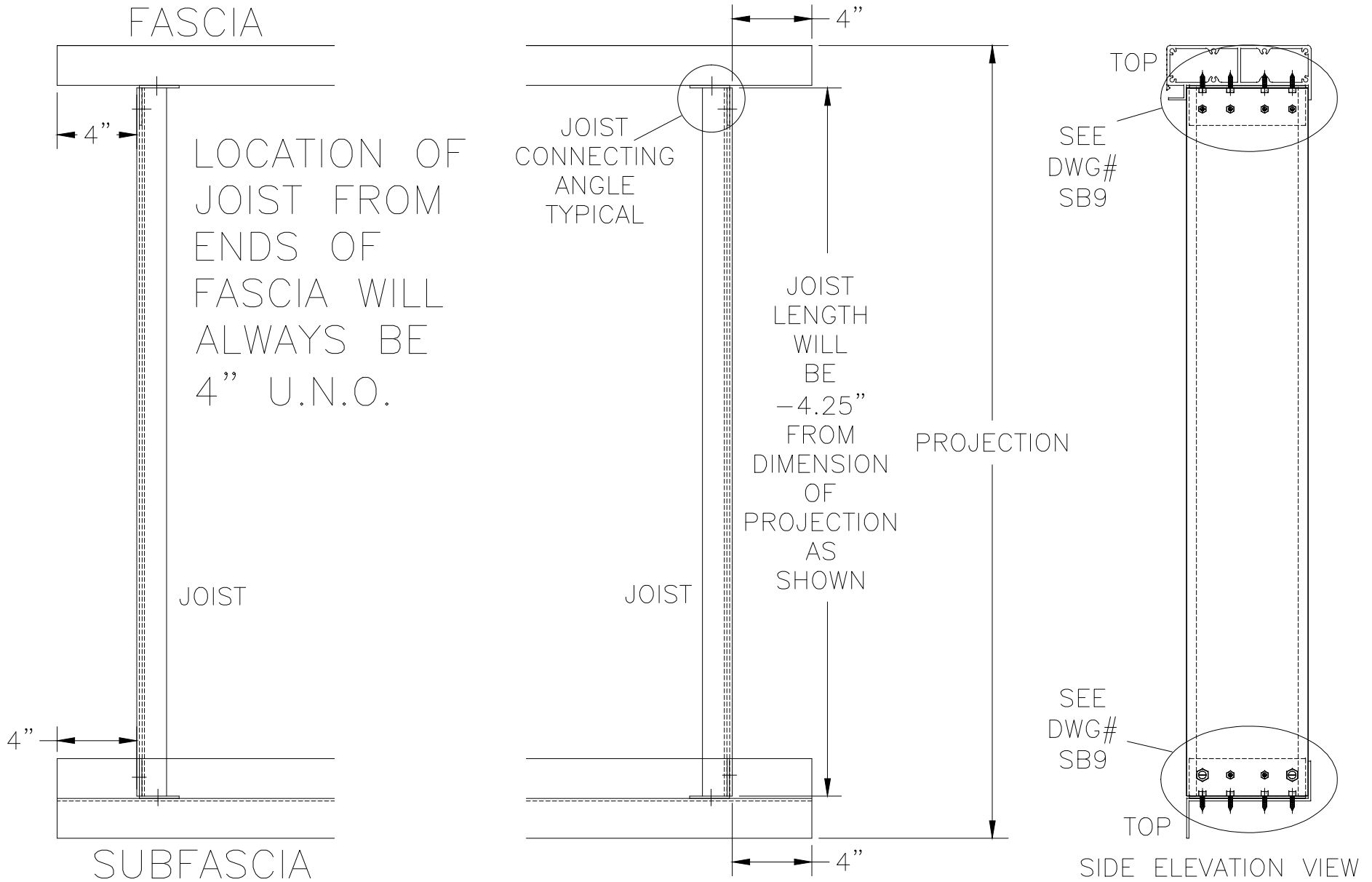
PRE³ ALUMINUM RAILING SYSTEM (TR200)



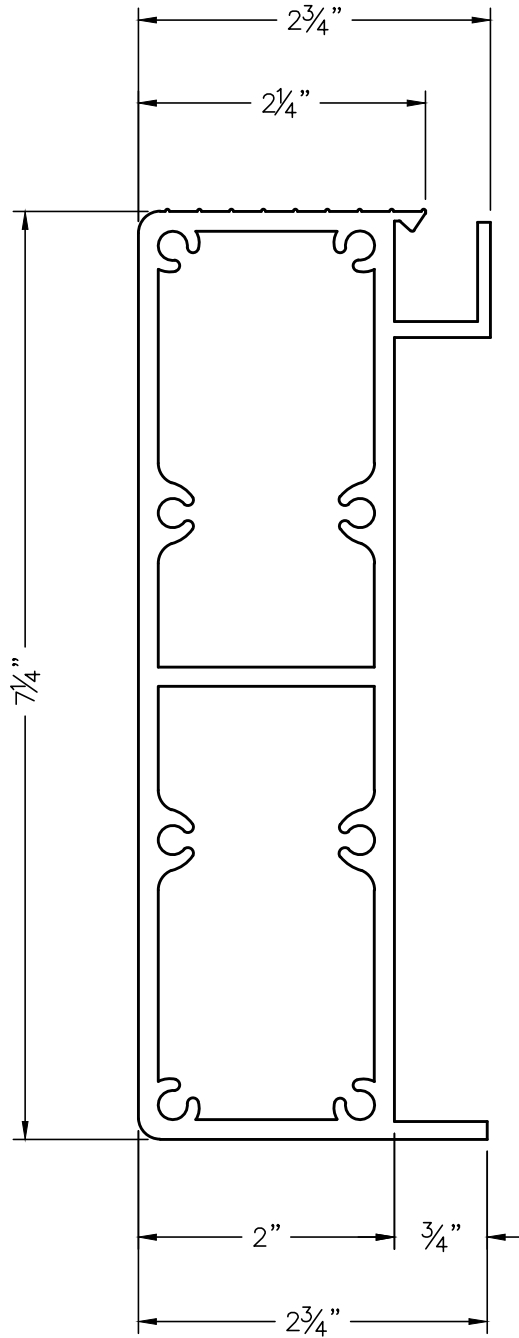
SHEET NOTES:

1. PRE³ FRONT FASCIA
2. PRE³ SAG ROD YOKE
3. PRE³ SAG ROD YOKE PLATE
4. PRE³ JOIST SUPPORT SUB FASCIA
5. PRE³ SAG ROD
6. PRE³ SAG ROD BRACKET
7. PRE³ D1x6 ALUMINUM DECKING SUB FASCIA BRACKET
8. PRE³ SAG ROD
9. PRE³ SAG ROD

CLIENT NAME SUBMITTAL		SALE REPRESENTATIVE MARK WEISSENBUEHLER		AMERICAN STRUCTURES & DESIGN INC. 218TH STEWART RD SE PACIFIC, WA 98047	
APPROVAL	JOB #	PHONE 253 833-4343	FAX # 253 833-4545	PRE ³ PRE ENGINEERED DECK W/200 SERIES RAIL & PICKET INFILL	
REVISION # 2	DRAWING #	http://americanstructures.com		SCALE	DATE 10. 27. 13



CLIENT NAME AS&D PRE-ENGINEERED DECK SUBMITTAL		SALE REPRESENTATIVE MARK WEISSENBUHLER		AMERICAN STRUCTURES & DESIGN INC. 218TH STEWART RD SE PACIFIC, WA 98047	
APPROVAL	JOB #	PHONE 253 833-4343		DECK FRAME DETAIL SHEET	
REVISION #	DRAWING #	FAX # 253 833-4545			
	SB7	http://americanstructures.com		SCALE	DATE 01. 21. 13



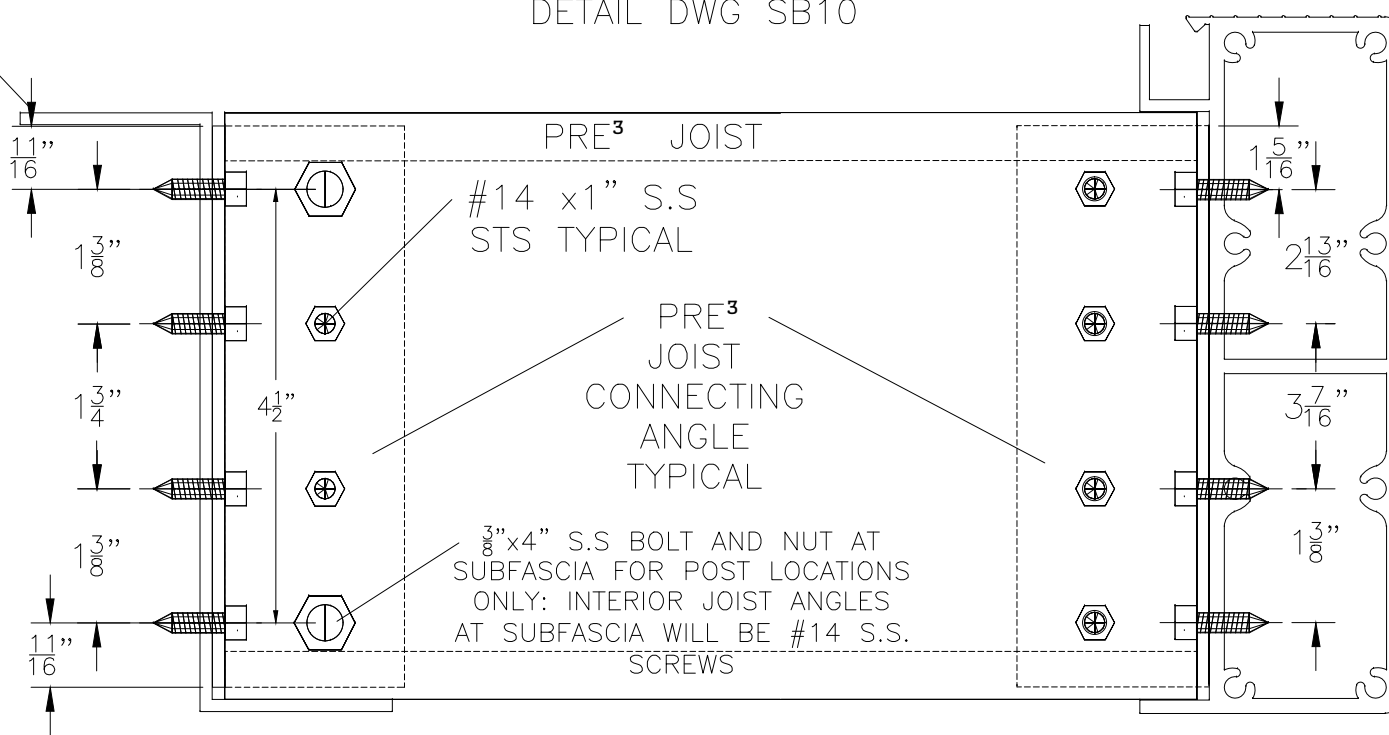
6063 ALUMINUM

CLIENT NAME		SALE REPRESENTATIVE MARK WEISSENBUHLER		AMERICAN STRUCTURES & DESIGN INC. 218 STEWART RD SE PACIFIC, WA 98047	
APPROVAL		JOB #		PHONE 253 833-4343	
DRAWING # (SB8) Submittal Dwg.		DRAWN BY: J. VISEK		FAX # 253 833-4545	
				PRE ³ D7.25x2.75 ALUMINUM FASCIA	
				SCALE 1 : 1.5	
				DATE 7. 31. 2014	
				http://americanstructures.com	

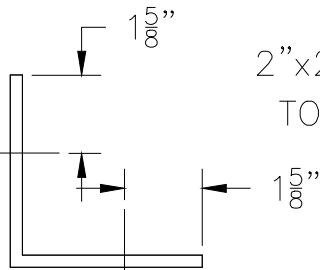
PRE³
SUBFASCIA

NOTE: JOIST TO BE PREDRILLED
FOR ANGLE ATTACHMENT— SEE
DETAIL DWG SB10

PRE³ FASCIA



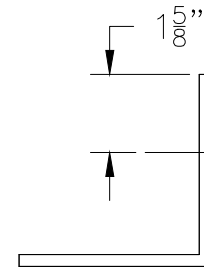
DRILL 4 1/4" HOLES FOR #14 SCREWS



2"x2"x.125" ANGLE, CUT
TO 5 13/16" LENGTH EACH

DRILL 2 7/16" HOLES FOR 3/8" BOLTS AT OUTSIDE JOIST/2 LOCATIONS AT EACH DECK

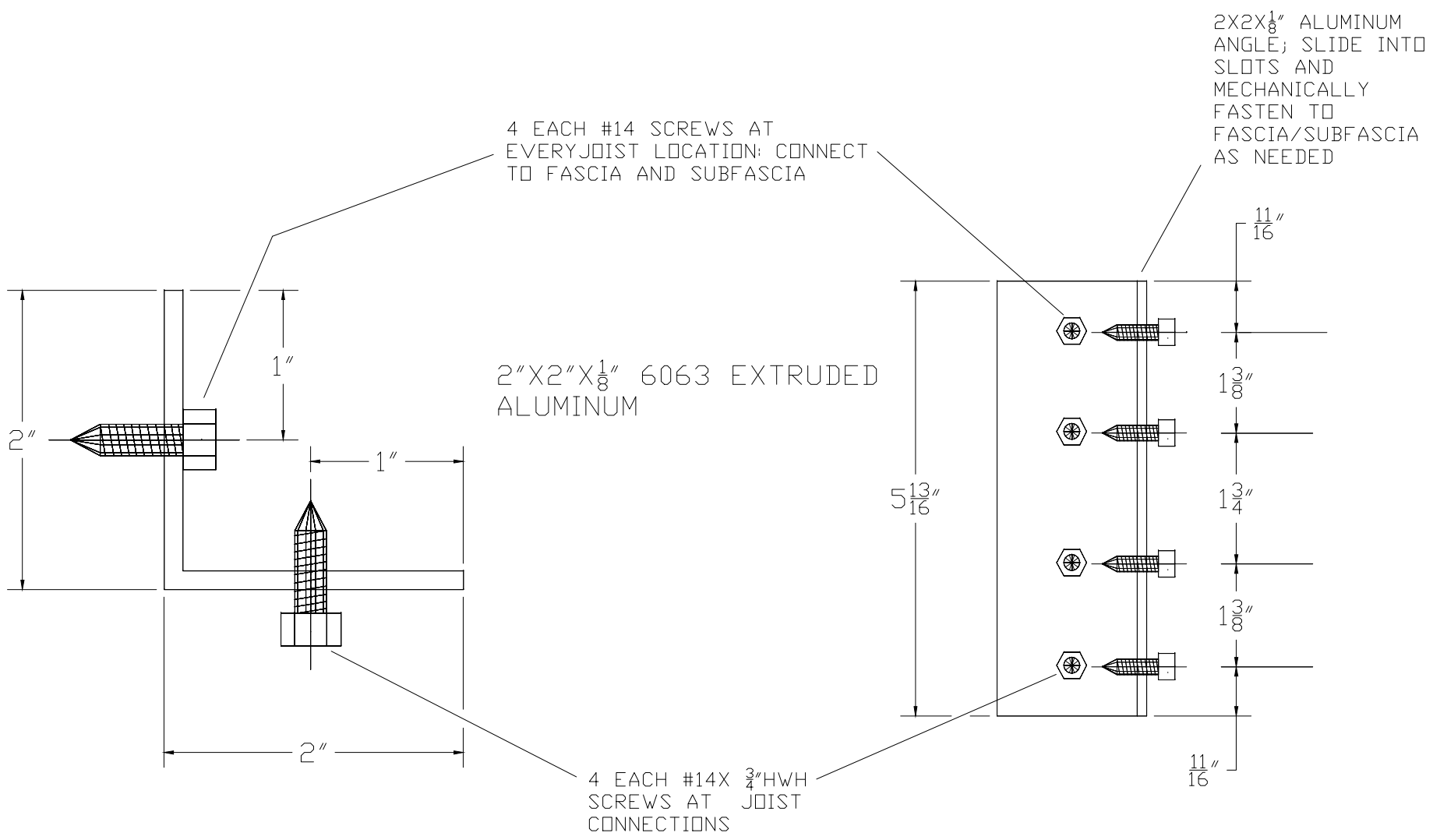
AT SUB FASCIA CONNECTION



DRILL 4 1/4" HOLES FOR #14 SCREWS

AT FASCIA CONNECTION

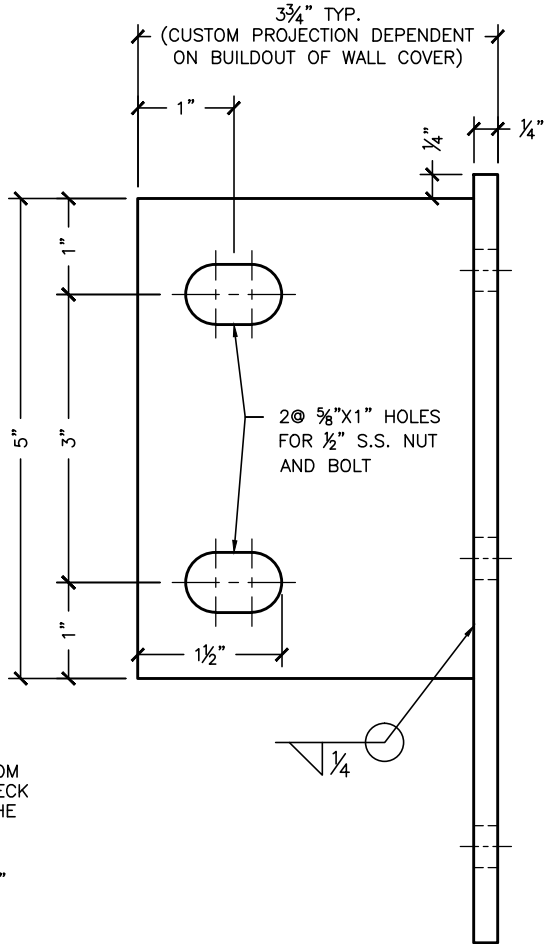
CLIENT NAME AMERICAN STRUCTURES AND DESIGN INC.		SALE REPRESENTATIVE MARK WEISSENBUHLER		AMERICAN STRUCTURES & DESIGN INC. 218 STEWART RD SE PACIFIC, WA 98047	
APPROVAL	JOB #	PHONE 253 833-4343		PRODUCT NAME PRE ³ JOIST CONNECTION @ FASCIA AND SUBFASCIA	
REVISION #	DRAWING # SB9	FAX # 253 833-4545		SCALE 1 : 2	
		http://americanstructures.com		DATE 3-12-13	



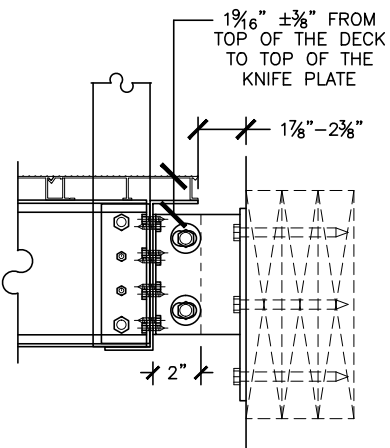
TOP VIEW

SIDE ELEVATION

CLIENT NAME: AMERICAN STRUCTURES AND DESIGN INC.		SALE REPRESENTATIVE MARK WEISSENBUHLER		AMERICAN STRUCTURES & DESIGN INC. 218 STEWART RD SE PACIFIC WA. 98047	
APPROVAL	JOB #	PHONE 253 833-4343	PRODUCT NAME		
REVISION #	DRAWING #	FAX # 253 833-4545	PRE ³ D2x2x.125 JOIST ANGLE DETAIL		
	SB11	http://americanstructures.com		SCALE 1:2	DATE 3-12-13

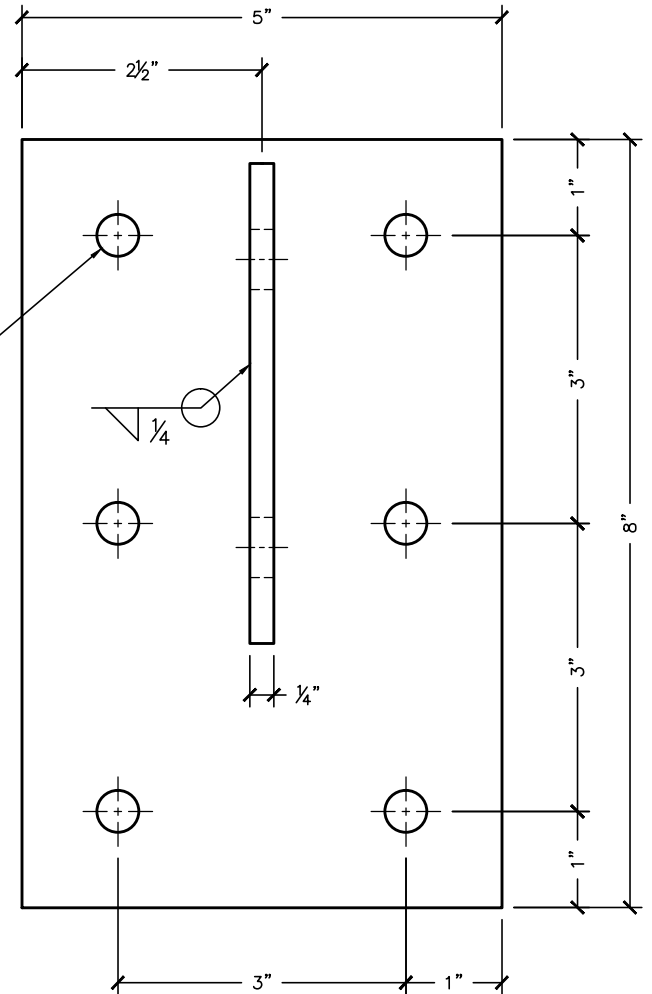


SIDE ELEVATION
SCALE 1 : 2



DECK CONNECTION TYPICAL
SCALE 1 : 8

(6) $\phi 7/16$ " HOLES FOR $3/8$ " ATTACHMENT TYPICAL

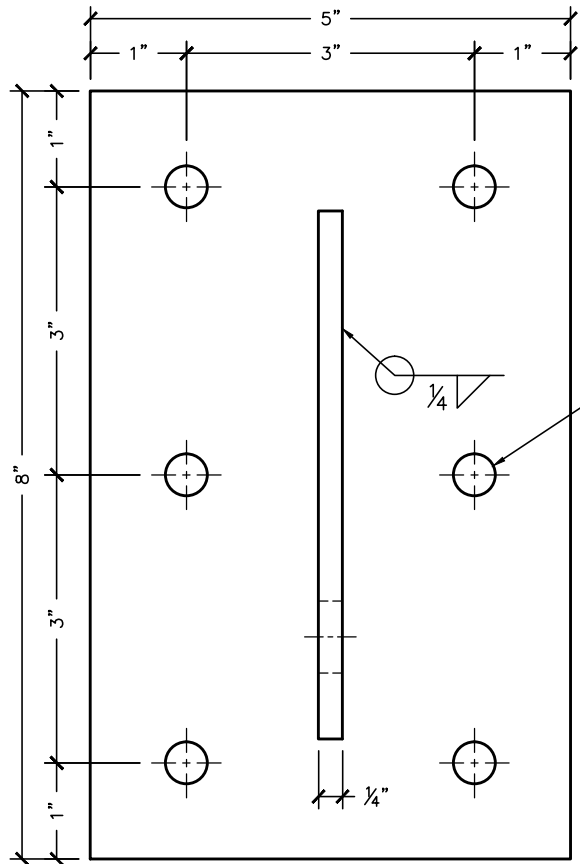


FRONT ELEVATION
SCALE 1 : 2

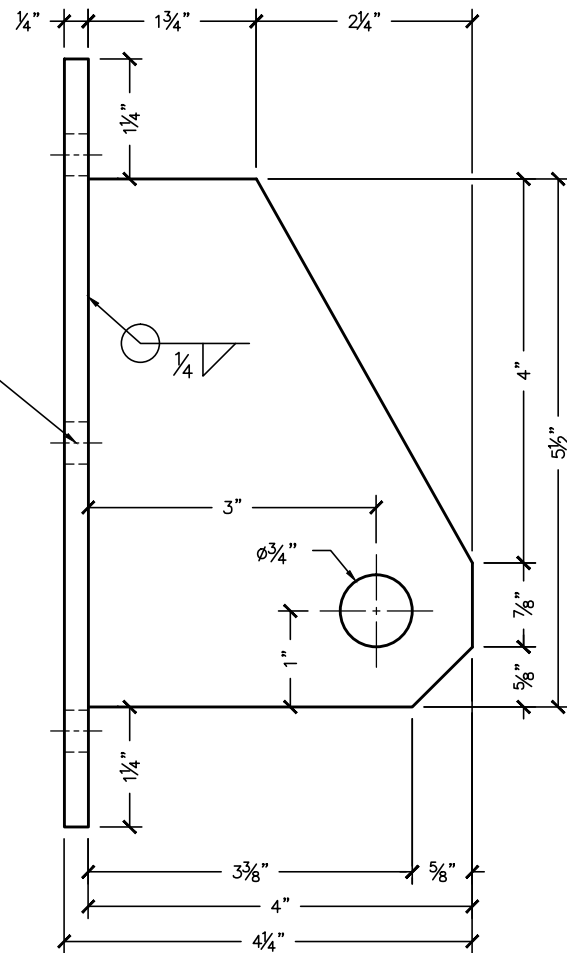
- (6) $\phi 3/8$ " x 4" 18-8 SS HEX LAG OR
- (6) $\phi 3/8$ " - 16 SS HEX HEAD THRU BOLTS OR
- (6) $\phi 3/8$ " x 3 1/2" SS WEDGE ANCHORS

NOTE:
1. BRACKETS ARE FABRICATED FROM COLD FORMED 1/4" STEEL

CLIENT NAME		SALE REPRESENTATIVE MARK WEISSENBUHLER		AMERICAN STRUCTURES & DESIGN INC. 218 STEWART RD SE PACIFIC, WA 98047	
APPROVAL		JOB #		PHONE 253 833-4343	
DRAWING # (SB12)		DRAWN BY: J. VISEK		FAX # 253 833-4545	
				PRE ³ SUB FASCIA BRACKET	
				SCALE	
				DATE 2. 10. 2014	
http://americanstructures.com					

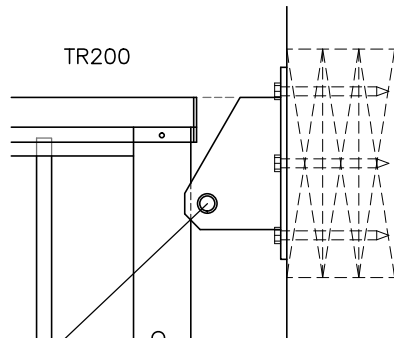
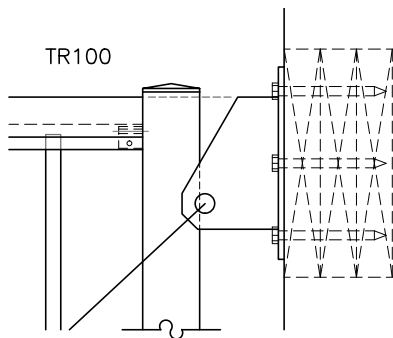


FRONT ELEVATION



SIDE ELEVATION

(6) 7/16" HOLES FOR 3/8"X5" LAGS TYPICAL

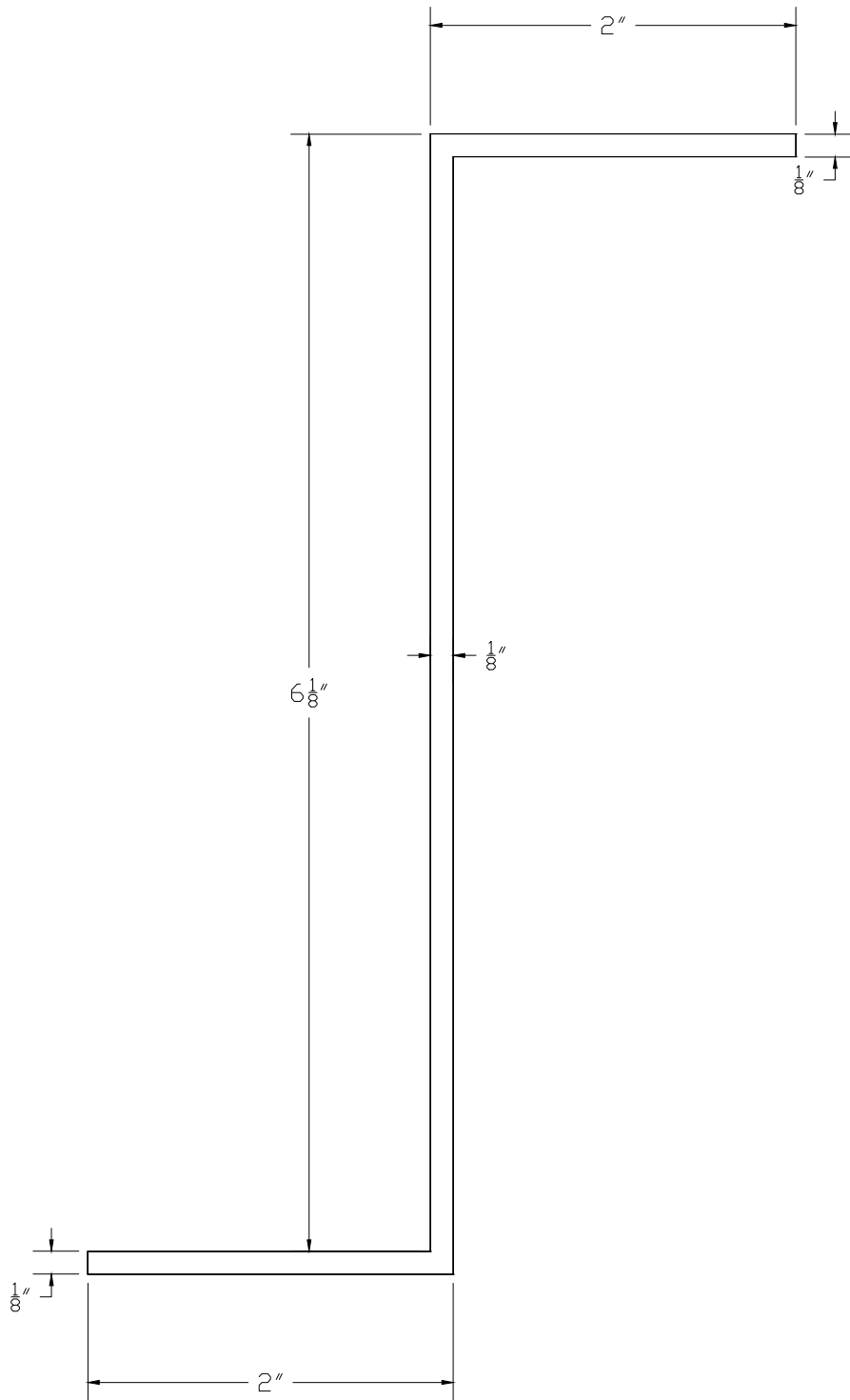


- (6) $\phi 3/8$ " x 5" 18-8 SS HEX LAG OR
- (6) $\phi 3/8$ "-16 SS HEX HEAD THRU BOLTS OR
- (6) $\phi 3/8$ " x 3 1/2" SS WEDGE ANCHORS

NOTE:
SAG ROD BRACKET IS
FABRICATED FROM COLD
FORMED 1/4" STEEL

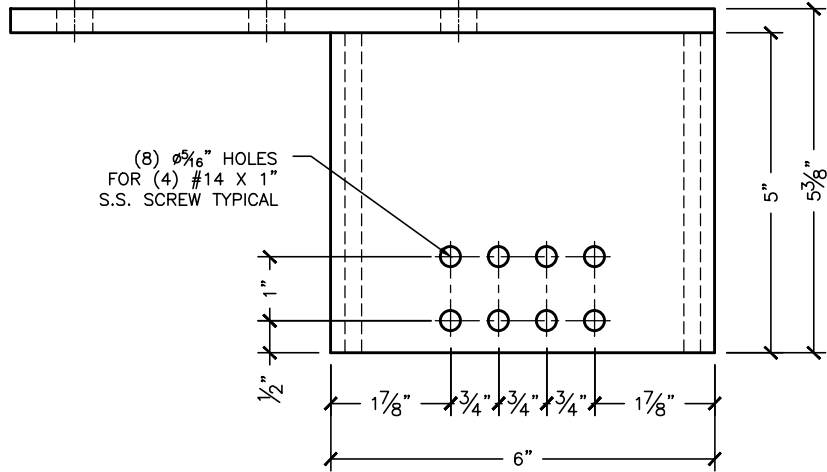
TOP OF THE BRACKET FLASH
WITH TOP OF THE RAILING.
DECK CONNECTION TYPICAL
SCALE 1 : 8

CLIENT NAME		SALE REPRESENTATIVE MARK WEISSENBUEHLE		AMERICAN STRUCTURES & DESIGN INC. 218 STEWART RD SE PACIFIC, WA 98047	
APPROVAL		JOB #		PHONE 253 833-4343	
DRAWING # (SB13)		DRAWN BY: J. VISEK		FAX # 253 833-4545	
				PRE³ SAG ROD BRACKET	
				SCALE 1 : 2	
				DATE	
http://americanstructures.com					



6063 EXTRUDED ALUMINUM

http://americanstructures.com			SALE REPRESENTATIVE MARK WEISSENBUHLER	AMERICAN STRUCTURES & DESIGN INC.
APPROVAL			PHONE 253 833-4343	218 STEWART RD SE PACIFIC WASHINGTON 98047
REVISION #	DRAWING SB14	DATE 3. 12. 13	FAX # 253 833-4545	PRODUCT NAME PRE ³ D6.25x2 SUB FASCIA

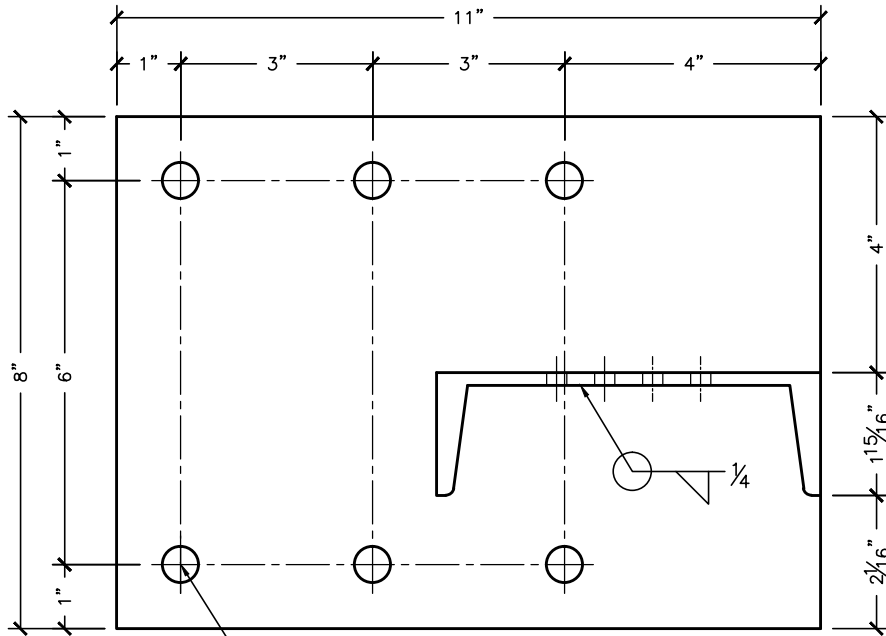


(8) $\phi 5/16$ " HOLES
FOR (4) #14 X 1"
S.S. SCREW TYPICAL

TOP VIEW

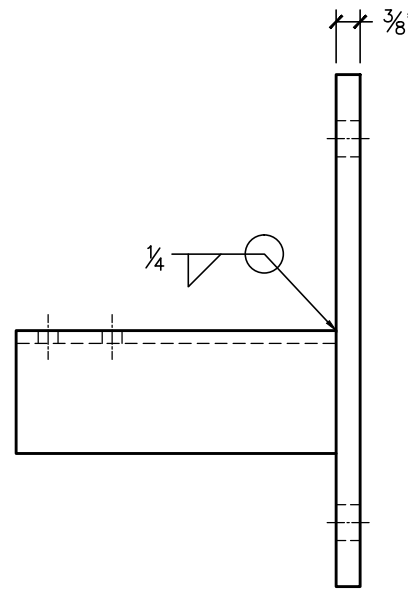
NOTE:
BRACKET IS FABRICATED FROM
HOT OR COLD FORMED $3/8$ " STEEL PLATE AND
CHANNEL C6X8.2 - Standard A572 Grade 50

- (6) $\phi 1/2$ " x $4 1/2$ " LAG SCREWS OR
- (6) $\phi 1/2$ " x THRU BOLTS OR
- (6) $\phi 1/2$ " x $3 1/2$ " EXPANSION ANCHORS

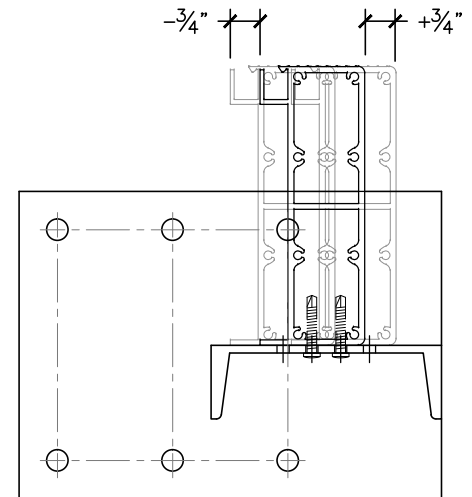


(6) $\phi 5/16$ " HOLES FOR $1/2$ "
ATTACHMENT TYPICAL

FRONT ELEVATION



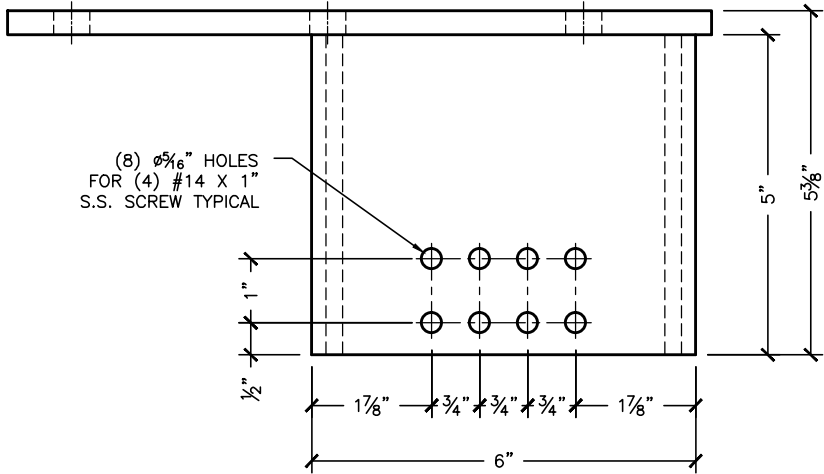
SIDE ELEVATION



FASCIA WILL BE ATTACH
TO SIDE BRACKET WITH
(4) #14 x 1.5" S.S. SCREWS
ADJUST $\pm 3/4$ " FROM CENTER
MOUNTING DETAIL SCALE 1 : 5

(LEFT HAND SHOWN, RIGHT HAND OPPOSITE)

CLIENT NAME		SALE REPRESENTATIVE MARK WEISSENBUHLER		AMERICAN STRUCTURES & DESIGN INC.	
APPROVAL		JOB #		218 STEWART RD SE PACIFIC, WA 98047	
DRAWING # (SB15)		DRAWN BY: J. VISEK		PHONE 253 833-4343	
				FAX # 253 833-4545	
				PRE ³ SIDE OFFSET BRACKET FOR DECKS	
				http://americanstructures.com	
				SCALE 1 : 3	
				DATE 3. 13. 2014	

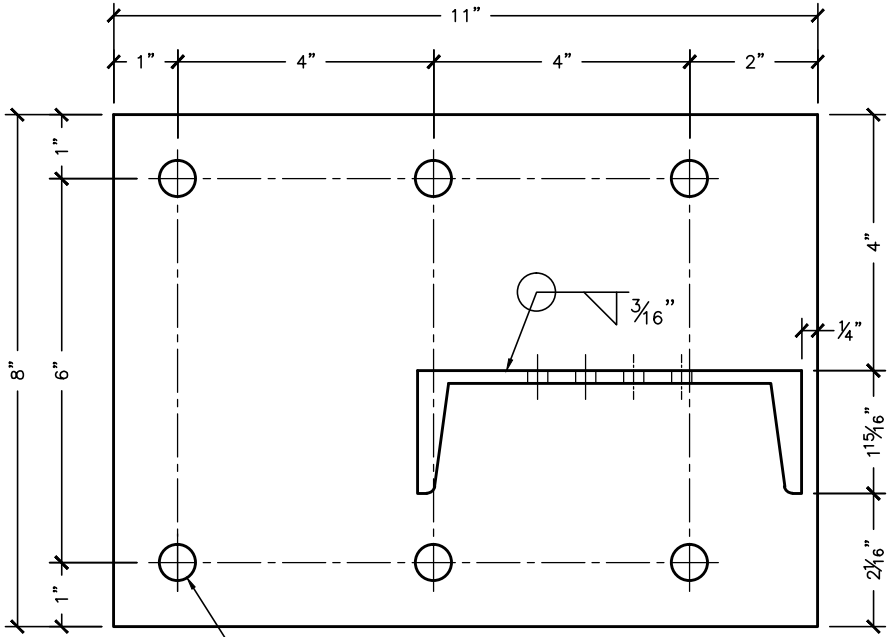


(8) $\varnothing 5/16$ " HOLES
FOR (4) #14 X 1"
S.S. SCREW TYPICAL

TOP VIEW

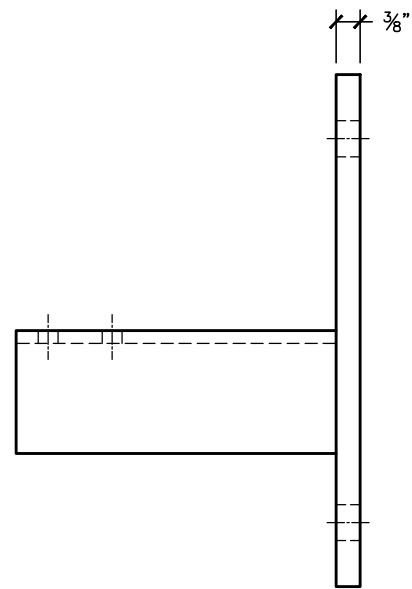
NOTE:
BRACKET IS FABRICATED FROM
HOT OR COLD FORMED $3/8$ " STEEL PLATE AND
CHANNEL C6X8.2 - Standard A572 Grade 50

- (6) $\varnothing 1/2$ " x $4 1/2$ " 16-6 SS HEX LAG OR
- (6) $\varnothing 1/2$ "-16 SS HEX HEAD THRU BOLTS OR
- (6) $\varnothing 1/2$ " x $3 1/2$ " SS WEDGE ANCHORS

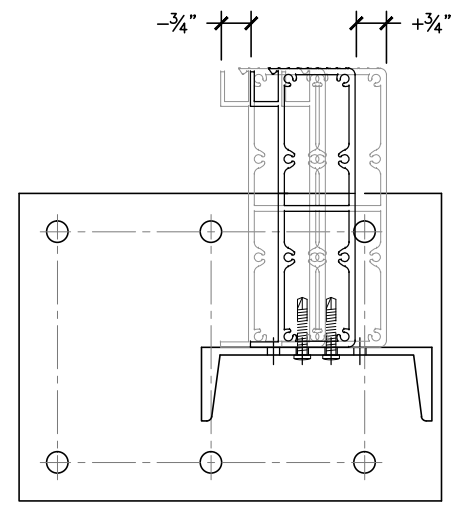


(6) $\varnothing 3/16$ " HOLES FOR $1/2$ "
ATTACHMENT TYPICAL

FRONT ELEVATION



SIDE ELEVATION

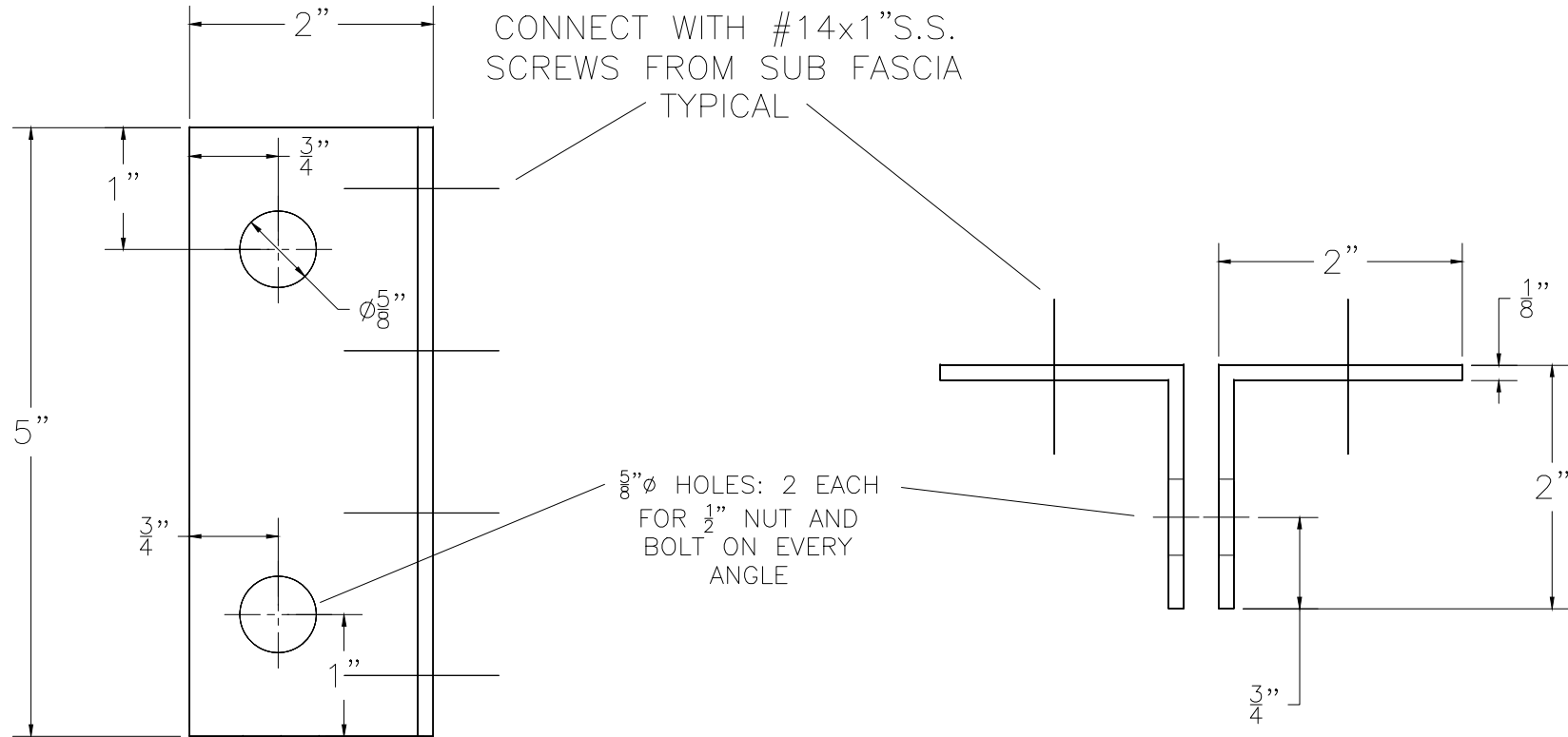


FASCIA WILL BE ATTACH
TO SIDE BRACKET WITH
(4) #14 x 1.5" S.S. SCREWS
ADJUST $\pm 3/4$ " FROM CENTER
MOUNTING DETAIL SCALE 1 : 5

(RIGHT HAND SHOWN, LEFT HAND OPPOSITE)

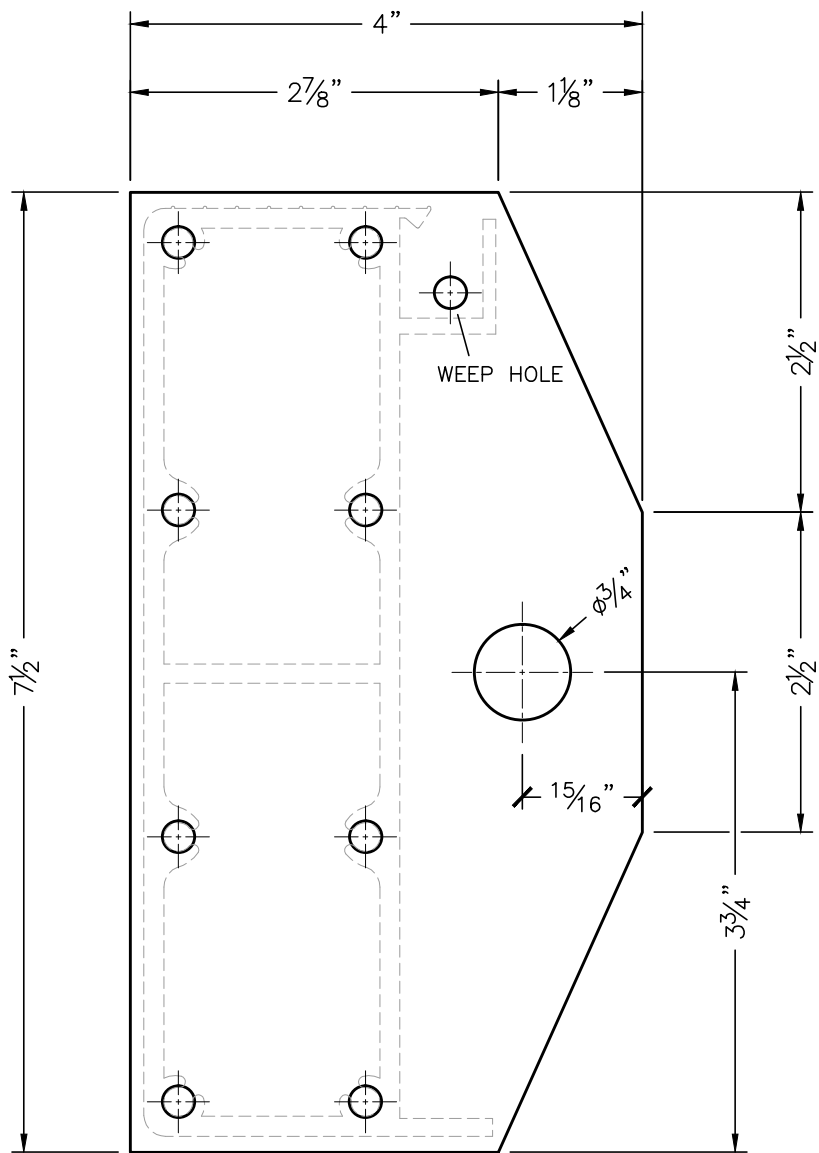
CLIENT NAME		SALE REPRESENTATIVE MARK WEISSENBUHLER		AMERICAN STRUCTURES & DESIGN INC.	
APPROVAL		JOB #		218 STEWART RD SE PACIFIC, WA 98047	
DRAWING # (SB15)		DRAWN BY: J. VISEK		PHONE 253 833-4343	
				FAX # 253 833-4545	
				PRE ³ SIDE OFFSET BRACKET FOR DECKS	
				http://americanstructures.com	
				SCALE 1 : 3	
				DATE 3. 13. 2014	

PRE³ KNIFE
PLATE ANGLE



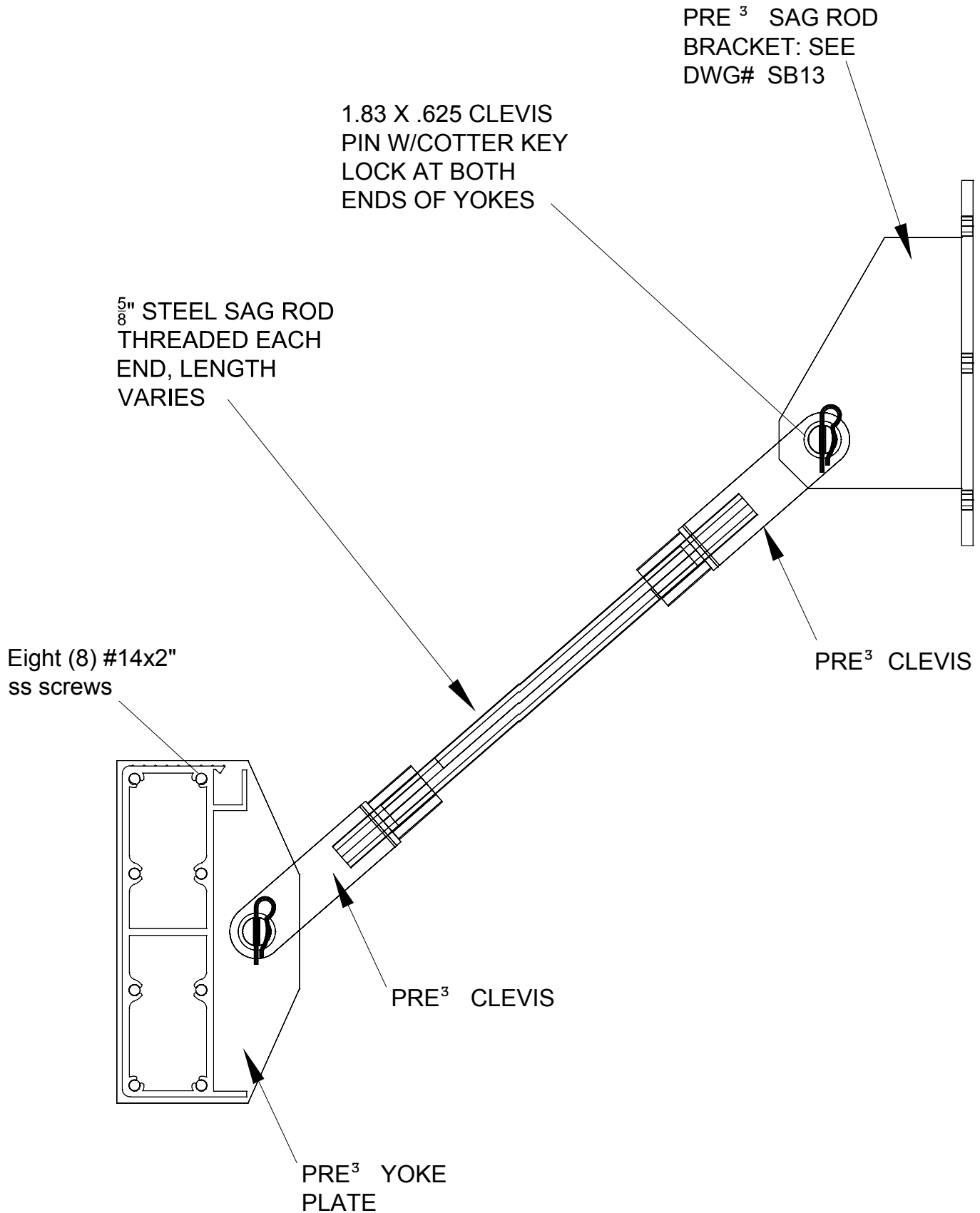
KNIFE BRACKET ANGLE
2"x2"x¹/₈" ALUMINUM

CLIENT NAME AMERICAN STRUCTURES AND DESIGN INC.		SALE REPRESENTATIVE MARK WEISSENBUHLER		AMERICAN STRUCTURES & DESIGN INC. 218 STEWART RD SE PACIFIC, WA 98047	
APPROVAL	JOB #	PHONE 253 833-4343		PRODUCT NAME	
REVISION #	DRAWING # SB16	FAX # 253 833-4545		PRE ³ KNIFE BRACKET ANGLE	
http://americanstructures.com				SCALE	DATE 3-12-13

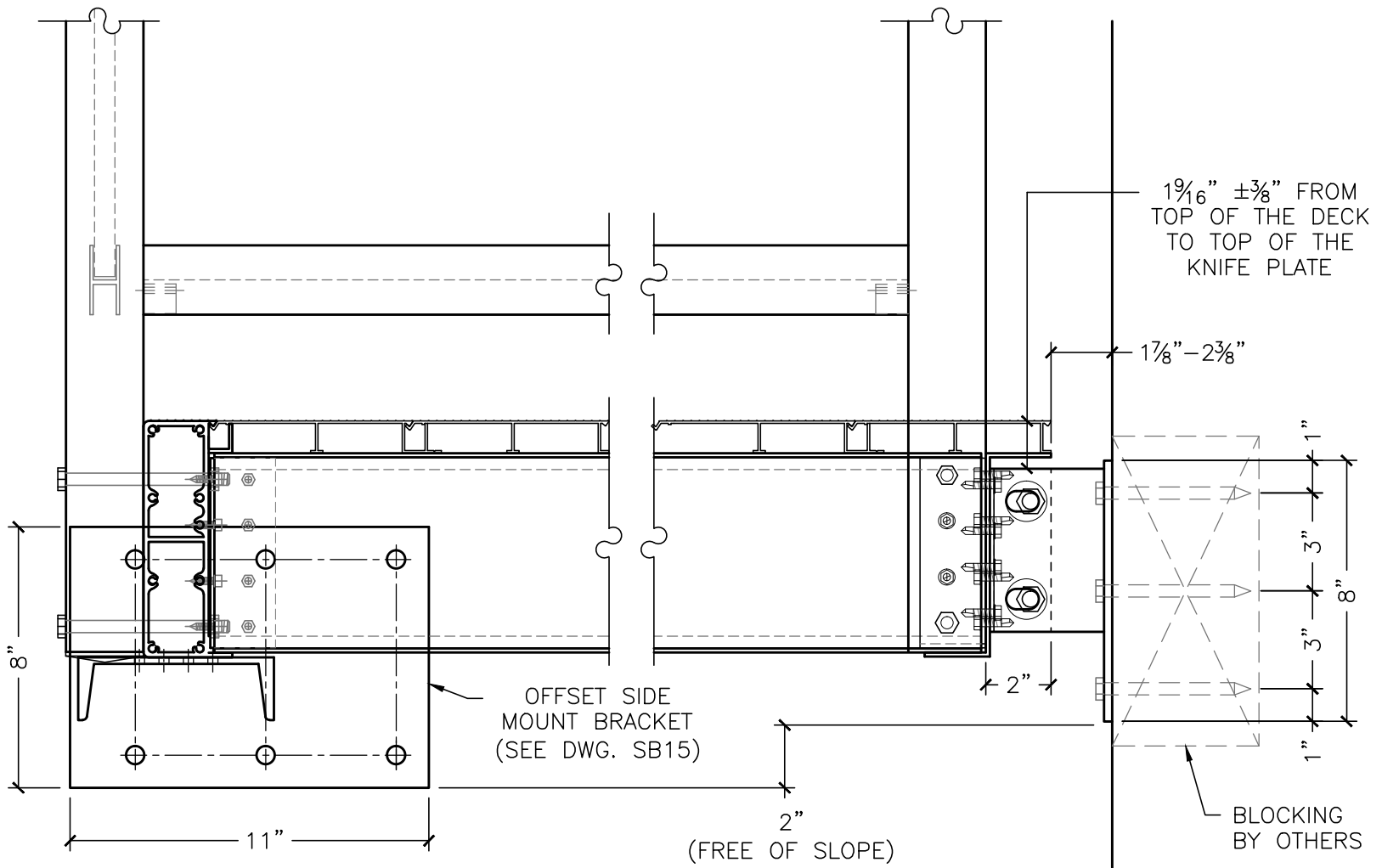


.375 IN 6063-T5 EXTRUDED ALUMINUM

CLIENT NAME		SALE REPRESENTATIVE MARK WEISSENBUHLER		AMERICAN STRUCTURES & DESIGN INC. 218 STEWART RD SE PACIFIC, WA 98047	
APPROVAL		JOB #		PHONE 253 833-4343	
DRAWING # (SB17) Submittal Dwg.		DRAWN BY: J. VISEK		FAX # 253 833-4545	
				PRE ³ YOKE PLATE	
				SCALE 1 : 1.5	
				DATE 7. 31. 2014	
				http://americanstructures.com	



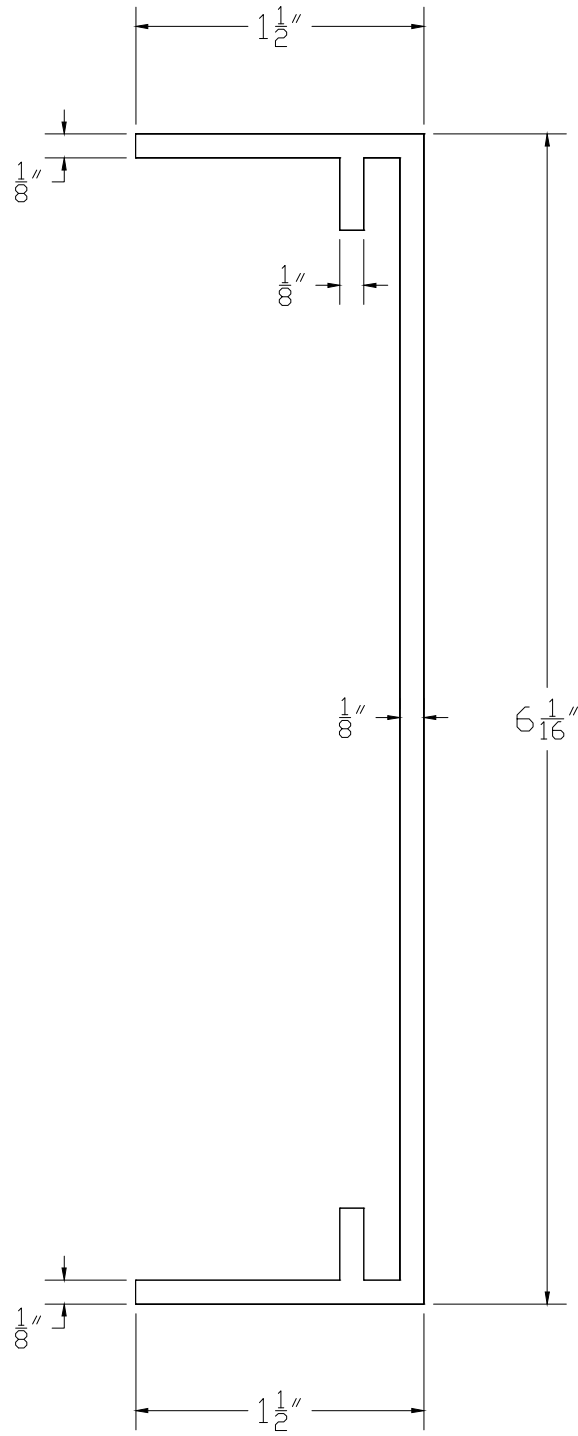
http://americanstructures.com			SALE REPRESENTATIVE MARK WEISSENBUHLER	AMERICAN STRUCTURES & DESIGN INC. 218 STEWART RD SE PACIFIC WASHINGTON 98047	
APPROVAL			PHONE 253 833-4343		PRODUCT NAME
REVISION #	DRAWING	DATE	FAX #	PRE³ SAG ROD CONNECTION DETAIL	
7	SB18	3. 12. 13	253 833-4545		



NOTE: SIDE OFFSET BRACKET IS MOUNTED TO WALL WITH CENTER OF C-CHANNEL TO CENTER OF FASCIA

LEFT HAND, RIGHT HAND OPPOSITE

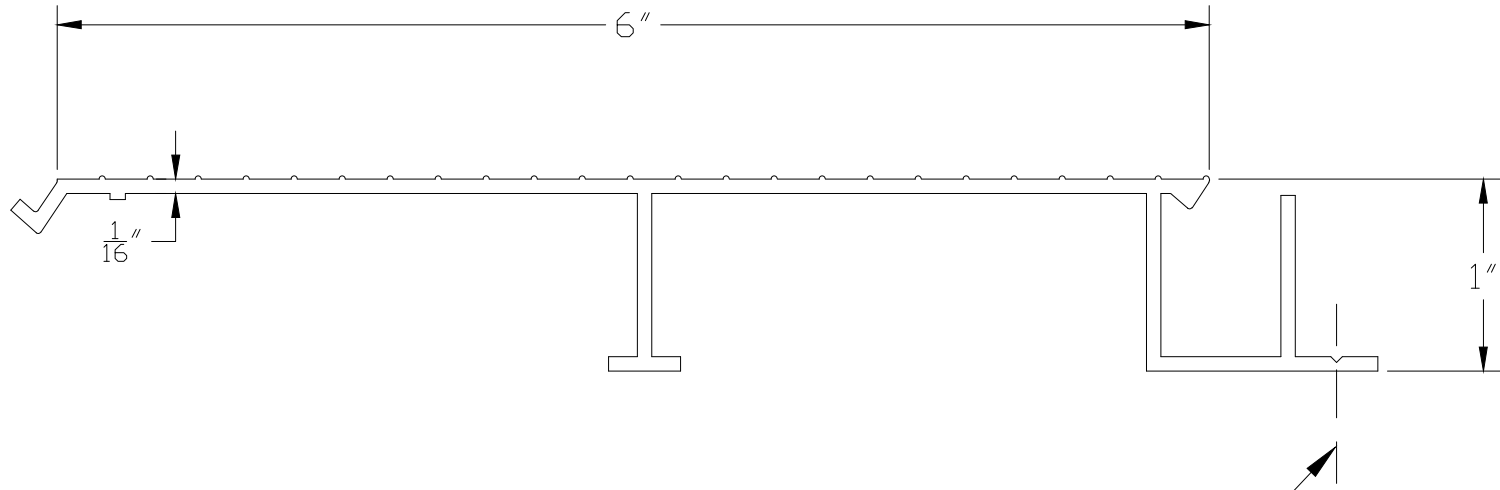
CLIENT NAME		SALE REPRESENTATIVE MARK WEISSENBUHLER		AMERICAN STRUCTURES & DESIGN INC. 218 STEWART RD SE PACIFIC, WA 98047	
APPROVAL	JOB #	PHONE 253 833-4343		BALCONY WITH SIDE MOUNT BRACKET	
		FAX # 253 833-4545			
DRAWING # (SB19) Submittal Drawing		DRAWN BY: J. VISEK		SCALE 1 : 10	DATE
				http://americanstructures.com	



6063 ALUMINUM

http://americanstructures.com			SALE REPRESENTATIVE MARK WEISSENBUHLER	AMERICAN STRUCTURES & DESIGN INC. 218 STEWART RD SE PACIFIC WASHINGTON 98047
APPROVAL			PHONE 253 833-4343	PRODUCT NAME
REVISION # 4	DRAWING SB20	DATE 3. 12. 13	FAX # 253 833-4545	PRE ³ D6.06x1.5 DECK JOIST

PRE³ D1x6 INTERLOCKING
DECKING SYSTEM



SECURE TO FRAMING W/ #10X $\frac{3}{4}$ "
SELF TAPPING SCREWS

6063 ALUMINUM

SCALE 1: 1

CLIENT NAME AMERICAN STRUCTURES & DESIGN INC.		SALE REPRESENTATIVE MARK WEISSENBUHLER	AMERICAN STRUCTURES & DESIGN INC. 218 STEWART RD SE PACIFIC WASHINGTON 98047	
APPROVAL	JOB #	PHONE 253 833-4343	PRODUCT NAME	
REVISION #	DRAWING # SB21	FAX # 253 833-4545	PRE ³ D1x6 ALUMINUM DECKING	
		http://americanstructures.com	SCALE 1:1	DATE 3. 12. 13